

Product 511428



511428 Passive holder with tilt swivel Adjustable holder. Fits devices with skin that has the following dimensions: Width: 62-77 mm, Thickness: 6-10 mm.

Keep your iPhone in a passive holder on the road and you will always have it within easy sight and reach. Safe, comfortable and convenient! The holder has a neat and discreet design which blends well with the vehicle's interior. Your iPhone is held securely in place in an upright position for maximum cellular reception. You can connect an Apple Lightning cable and a headset to your iPhone while placed in the holder.

In order to find the correct holder for your skin: Measure your skin and compare with the dimensions for each holder. To use the holder, you first set the width to fit for your skin, then you can easily place your iPhone in the holder.

Fits devices with "standard" sized skins (not rugged or slim size). Fits devices with skin that has the following dimensions: Width: 62-77 mm, Thickness: 6-10 mm. (May fit for skins thicker than 10 mm, depending on shape/design of the edges).

The holder is made of black ABS plastic. It is easy to put the device into the holder, and just as easy to take it with you when leaving the vehicle. The holder is equipped with a tilt swivel so you can adjust the angle of your device in order to avoid light reflection on the screen. Attach onto ProClip Mounting Platform.

EAN: 7320285114289

Item no 511428 fits:

- Apple iPhone 5 (For all countries)
- Apple iPhone 5C (For all countries)
- Apple iPhone 5S (For all countries)
- Apple iPhone 6 (For all countries)

INSTALLATION INSTRUCTIONS

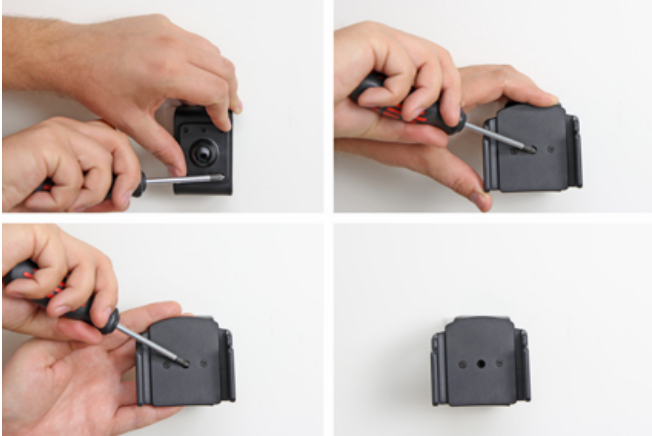
1.



2.



3.



4.



Please read all of the instructions and look at the pictures before attaching the holder.

1. To adjust the holder for your device: Loosen the screws on the front side of the holder, so the sides of the holders can be adjusted. Place the device in the holder and press the sides together so the device is firmly in place. Tighten the screws on the front side of the holder.

2. To install the holder: Loosen the screw in the center of the holder so you can remove the tilt swivel attaching plate on the back.

3. Place the attaching plate onto the desired position. Screw the attaching plate into place with the enclosed screws. Place the holder over the attaching plate so the screw fits in the hole in the tilt swivel. Screw a few turns on the screw, just so the thread starts to pull. Pull the holder toward you and hold it slightly tensed, in the same time tighten the screw so the holder is pulled toward the tilt swivel. Tighten the screw firm at first, then loosen it a bit so the holder is firmly in place, but still can be adjusted.

4. The holder is in place.